




HUNTERS[®]
HERE TO GET *you* THERE

 5  4  3  E

Hazelhurst Road, Worsley, Manchester

Offers Over £1,250,000



This beautifully restored Edwardian semi-detached home, originally built in 1904, sits in the heart of Worsley, one of Greater Manchester's most prestigious and desirable neighbourhoods. Elegantly updated throughout, the property blends rich period charm with sophisticated modern finishes, offering the perfect balance of character and contemporary comfort.

Spanning over 3,100 sq. ft. and arranged over four spacious floors, the home has been thoughtfully designed to meet the needs of modern family living while showcasing a wealth of original features. High ceilings, graceful bay windows, and decorative cornicing create a sense of grandeur, while every room has been finished to an impeccable standard.

The heart of the home is a stunning open-plan kitchen and living area with bespoke cabinetry, quartz worktops, integrated appliances, and large skylights that flood the space with natural light. This flows seamlessly into a landscaped garden via bi-fold doors, creating an ideal setting for entertaining or relaxing in privacy. The formal lounge and dining room offer a more traditional retreat, full of warmth and elegance.

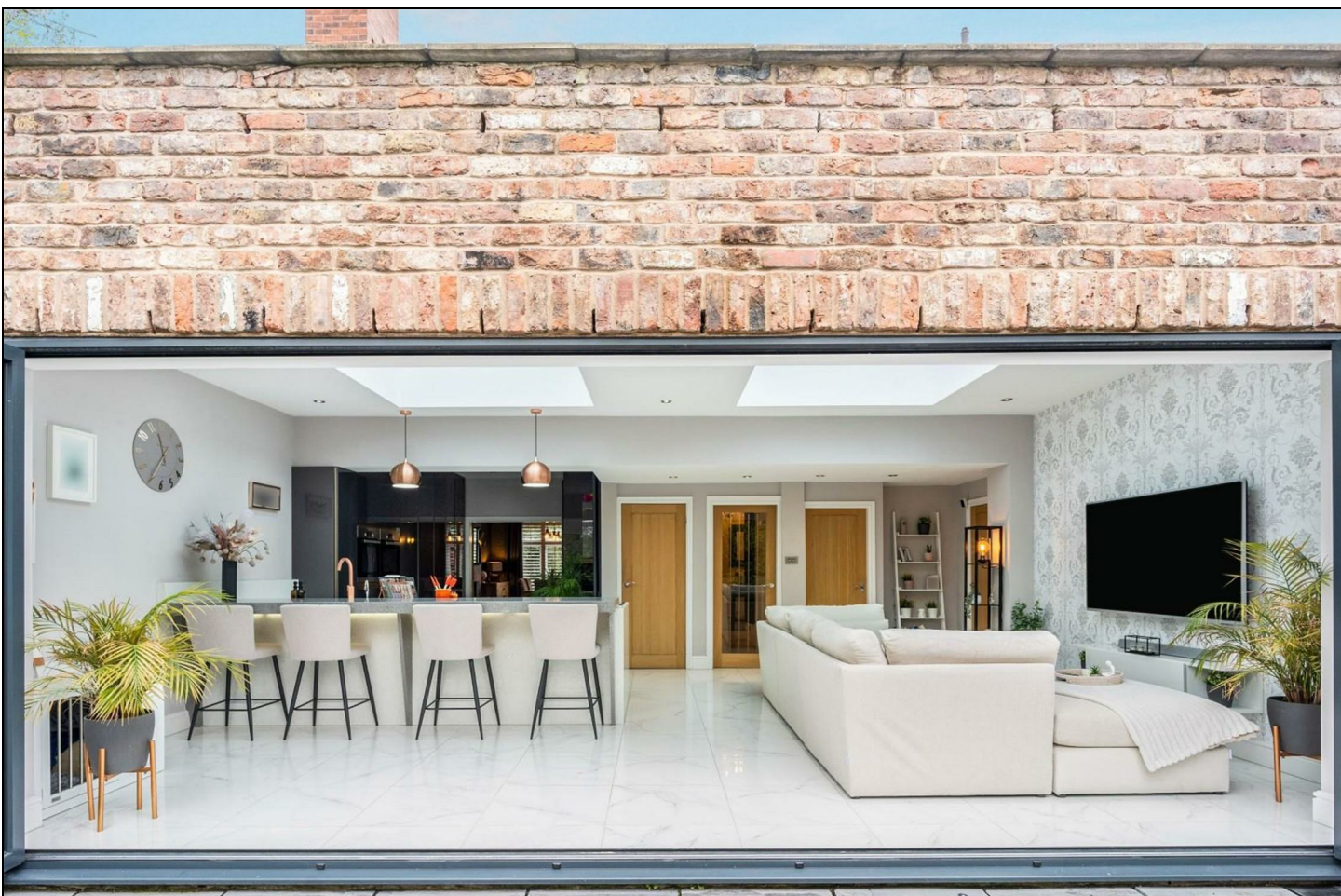
Upstairs, the property boasts five generous double bedrooms, including a luxurious principal suite with a private en-suite shower room. A separate family bathroom with freestanding bath, additional shower room, and separate WC serve the rest of the floor.

The lower ground level includes a highly functional utility space and a large walk-in pantry or storage room, adding to the home's practicality. Externally, a spacious resin driveway provides parking for up to four vehicles, alongside a large garage equipped with an electric vehicle charging point.

Positioned within walking distance of local amenities, Worsley village, canal-side walks and highly regarded schools, with easy access to Manchester city centre and the motorway network, this is a rare opportunity to acquire a turnkey family home.

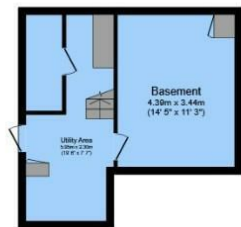
KEY FEATURES

- STUNNING PERIOD FIVE BEDROOMED PROPERTY
- MATURE PRIVATE FRONT AND REAR GARDENS
- 20 METER RESIN DRIVEWAY PROVIDING OFF ROAD PARKING FOR MULTIPLE VEHICLES
 - INTERNAL GARAGE
 - SET OVER FOUR FLOORS
 - CONVERTED CELLAR
 - FOUR BATHROOMS
- STUNNING OPEN PLAN KITCHEN/DINING/LIVING AREA
 - MUST BE SEEN TO FULLY APPRECIATE
 - HIGHLY SOUGHT AFTER WORSLEY LOCATION

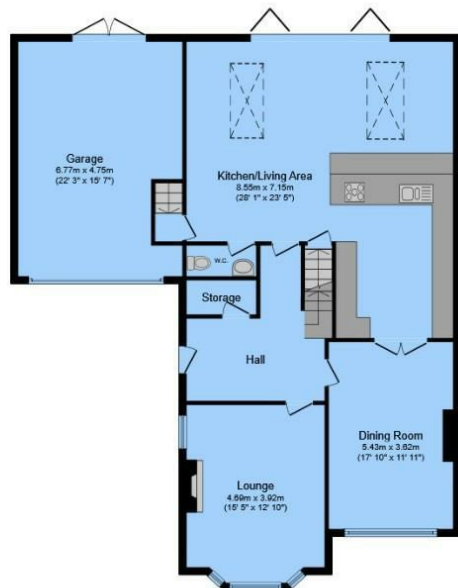




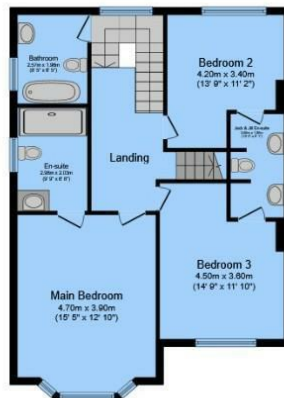




Basement



Ground Floor



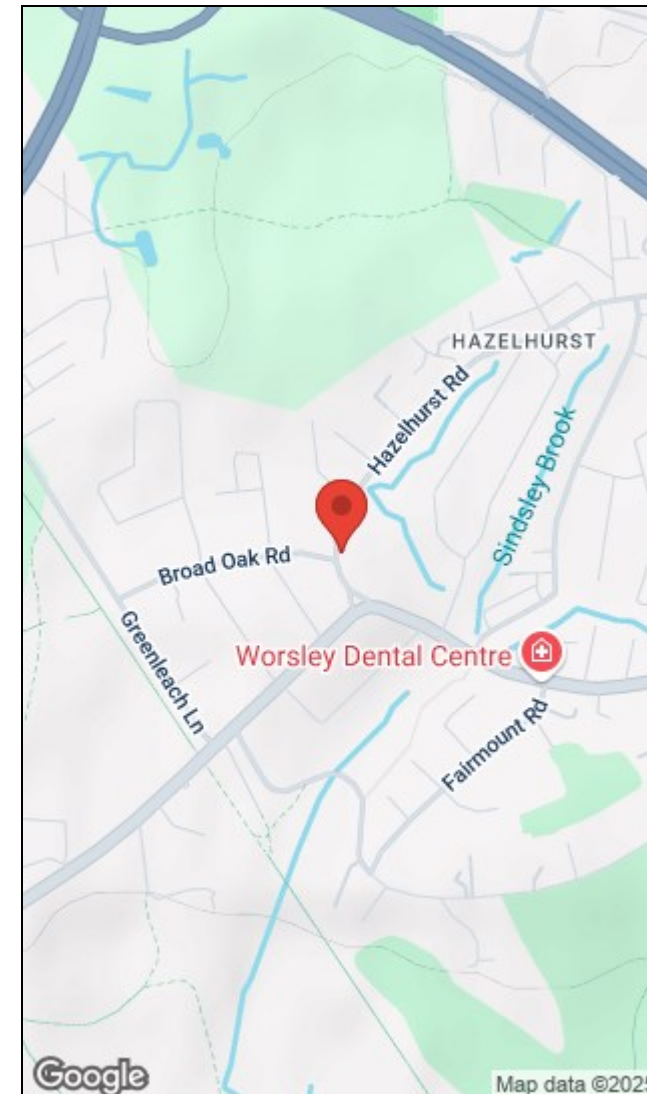
First Floor



Second Floor

Total floor area 295.4 sq.m. (3,180 sq.ft.) approx

This floor plan is for illustrative purposes only. It is not drawn to scale. Any measurements, floor areas (including any total floor area), openings and orientation are approximate. No details are guaranteed, they cannot be relied upon for any purpose and they do not form part of any agreement. No liability is taken for any error, omission or misstatement. A party must rely upon its own inspection(s). Powered by www.focalagent.com



Energy Efficiency Rating			Environmental Impact (CO ₂) Rating		
	Current	Potential		Current	Potential
Very energy efficient - lower running costs			Very environmentally friendly - lower CO ₂ emissions		
(92 plus) A			(92 plus) A		
(81-91) B			(81-91) B		
(69-80) C			(69-80) C		
(55-68) D			(55-68) D		
(39-54) E			(39-54) E		
(21-38) F			(21-38) F		
(1-20) G			(1-20) G		
Not energy efficient - higher running costs			Not environmentally friendly - higher CO ₂ emissions		
		69			
	40				
England & Wales EU Directive 2002/91/EC			England & Wales EU Directive 2002/91/EC		

The Granary, Worsley, Manchester, M28 2EB | 0161 790 9000
worsley@hunters.com | www.hunters.com



This Hunters business is independently owned and operated by Prestige Property International Limited | Registered Address Mill House 6 Worsley Road, Worsley, Manchester, England, M28 2NL | Registered Number: 05299070 England and Wales | VAT No: 938460205 with the written consent of Hunters Franchising Limited.